

The background of the slide is a light gray gradient with several realistic water droplets of various sizes scattered across it. The droplets have highlights and shadows, giving them a three-dimensional appearance. The text is centered and rendered in a dark blue, sans-serif font.

MID VANCOUVER ISLAND HABITAT ENHANCEMENT SOCIETY

MVIHES PROJECT REPORT – YEAR IN REVIEW

SEPT. 2022 TO SEPT. 2023 - HIGHLIGHTS

**WE ARE DEDICATED TO THE RECOVERY OF
WILD PACIFIC SALMON
THROUGH HABITAT RESTORATION AND
COMMUNITY ENGAGEMENT**

MVIHES

MID VANCOUVER ISLAND HABITAT ENHANCEMENT SOCIETY

SHELLY CREEK FISH HABITAT RESTORATION PROJECT

Partnership With Snaw-naw-as First Nation
Pacific Salmon Foundation Grant



MVIHES

MID VANCOUVER ISLAND HABITAT ENHANCEMENT SOCIETY



MVIHES

MID VANCOUVER ISLAND HABITAT ENHANCEMENT SOCIETY

RESTORATION, CONSERVATION & PROTECTION OF SIDE CHANNEL IN ERRP

Partnership with RDN Parks
Pacific Salmon Foundation Grant





ANCHORING CEDAR TREE FOR FISH HABITAT

Partnership with Nature Trust and BC Conservation Foundation
Aquatic Ecosystems Restoration Fund - DFO



MVIHES

MID VANCOUVER ISLAND HABITAT ENHANCEMENT SOCIETY

ANNUAL COHO SMOLT COUNT

Migrating from Shelly Creek to ER and out to Salish Sea



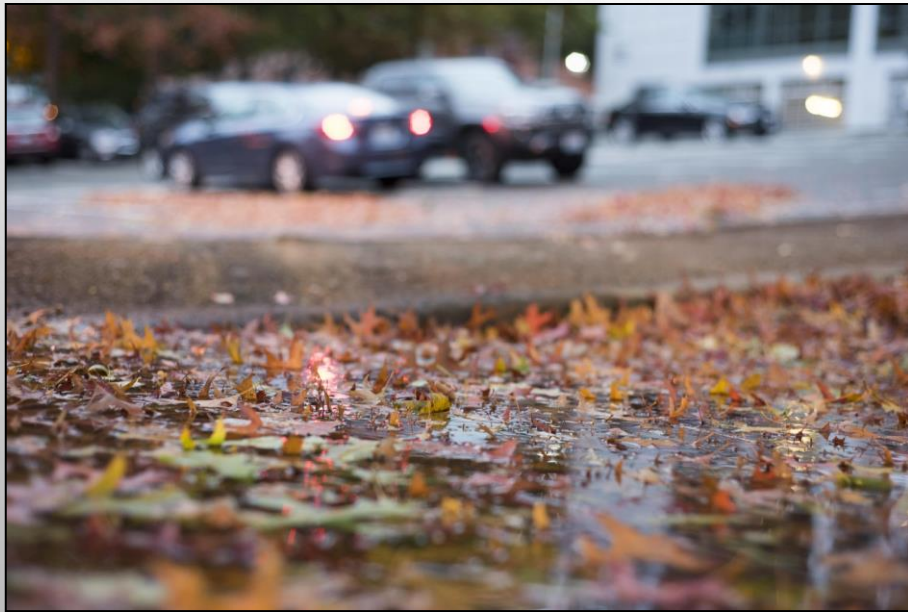
Bi-weekly water sampling
on Orange Bridge



August and Fall Flush
water sampling



**MONITORING FOR 6PPD-QUINONE IN
ENGLISHMAN RIVER**
On behalf of BC Conservation Foundation



FORAGE FISH SPAWNING HABITAT MONITORING - MONTHLY



PHOTOPOINT MONITORING ON THE ENGLISHMAN RIVER



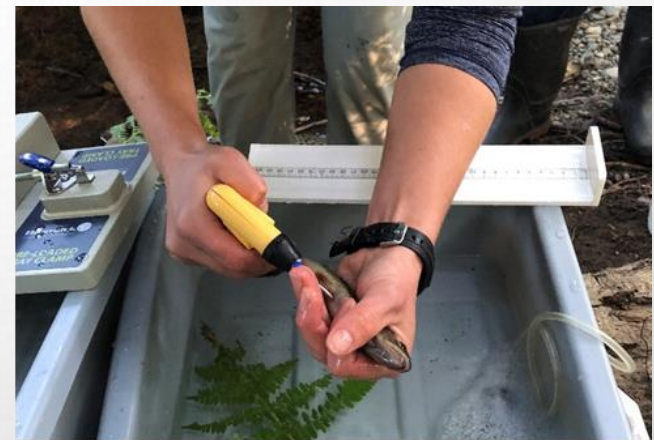
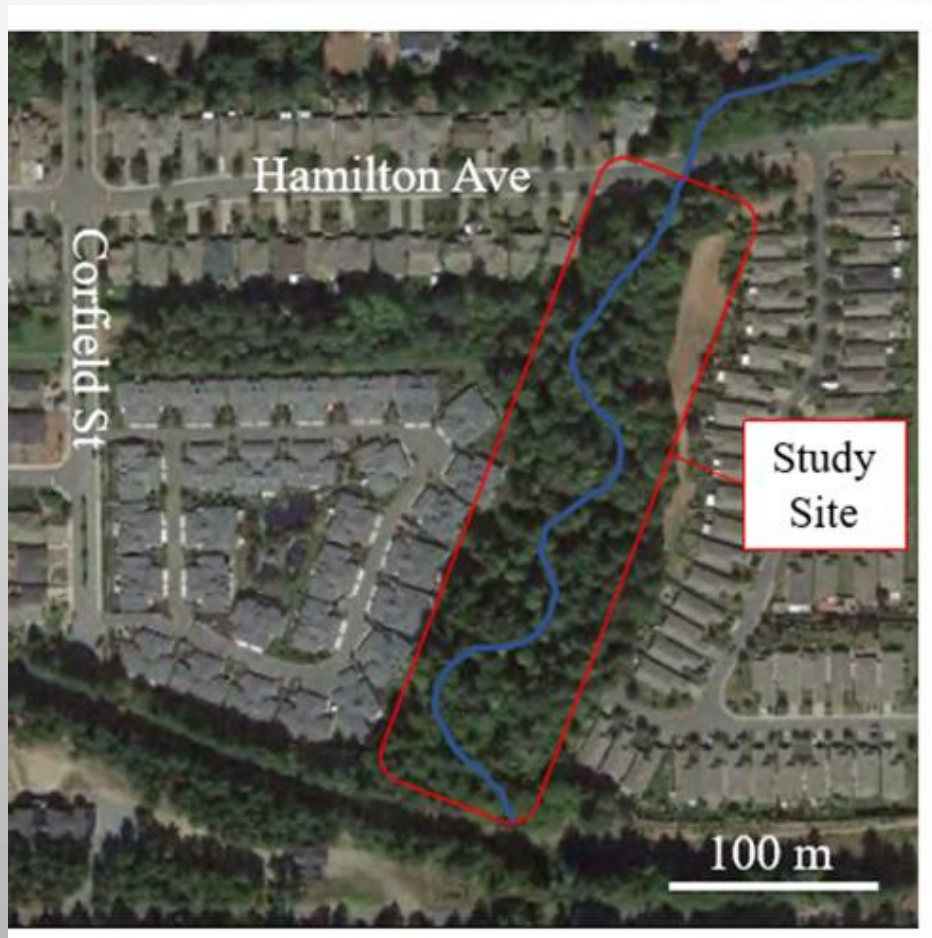
January 18, 2023



September 7, 2023

SHELLY CREEK CUTTHROAT TROUT TRACKING PROJECT

Partnership with BC Conservation Foundation



One of two antenna arrays
for tracking Cutthroat Trout



Data collectors and power
source for antenna arrays



EELGRASS MAPPING

Salmon Enhancement Program PIP Grant



MVIHES

MID VANCOUVER ISLAND HABITAT ENHANCEMENT SOCIETY



FRIENDS OF SHELLY CREEK PARK REMOVE INVASIVE SPECIES



OUTREACH & EDUCATION



Stewards in the Spotlight
Kinsmen Park, Departure Bay



River Never Sleeps
Rosewall Creek Fish Hatchery



City Of Parksville Open House



Forage Fish and Green Shores Display, San Pareil

SCHOOL LIAISON



Leah Wahlberg – developing class curriculum for elementary school teachers about creeks and salmon that can be complemented with outdoor activities with MVIHES

THE ART OF SALMON - WORLD RIVERS DAY – SEPT 24

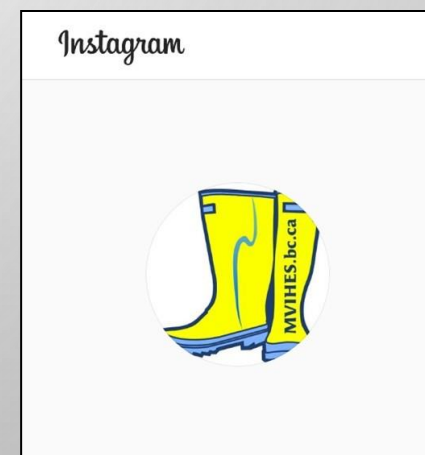


MVIHES

MID VANCOUVER ISLAND HABITAT ENHANCEMENT SOCIETY

MVIHES is on  YouTube

Check out our new [video](#) and subscribe to our channel.

A Facebook page header for MVIHES. On the left is a profile picture of a pair of yellow rubber boots with "MVIHES.bc.ca" written on the side. To the right of the profile picture, the page name "Mid Vancouver Island Habitat Enhancement So..." is displayed in white text, with "572 followers" below it. At the bottom left is a "Follow Page" button with the Facebook logo, and at the bottom right is a "Sign Up" button with a pencil icon.An Instagram profile card. At the top, the word "Instagram" is written in a cursive font. Below it is a circular profile picture of a yellow rubber boot with "MVIHES.bc.ca" written on the side.



MVIHES

MID VANCOUVER ISLAND HABITAT ENHANCEMENT SOCIETY

THANK YOU!

